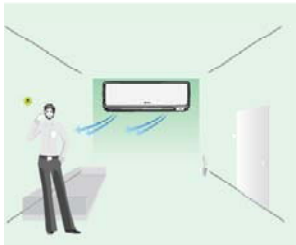


Case	Human Movement			Vertical Louver Movement	
	Zone A	Zone B	Zone C	Vertical Louver Left	Vertical Louver Right
Case 1	✓	-	-	////	////
Case 2	-	✓	-		
Case 3	-	-	✓	\\\\	\\\\
Case 4	✓	✓	-	////	
Case 5	-	✓	✓		\\\\
Case 6	✓	-	✓	////	\\\\
Case 7	✓	✓	✓	Parallel Swing	

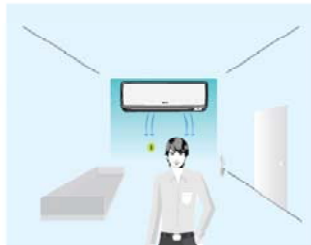
14ft — Horizontal distance covered from Indoor Unit  
 6.6ft — Height from ground level to Indoor Unit  
 10ft — Height from the ground level at the horizontal coverage distance  
 Total covered angle by sensor is 135°  
 The sensor catches the human movement speed @ 0.8 to 1.2 m/s



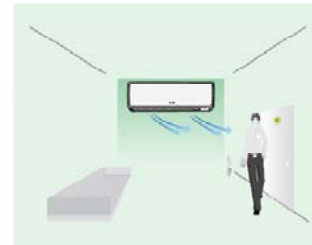
Case 1



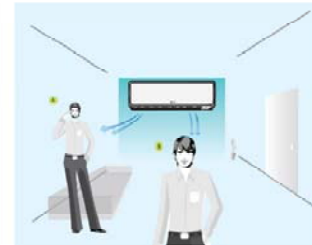
Case 2



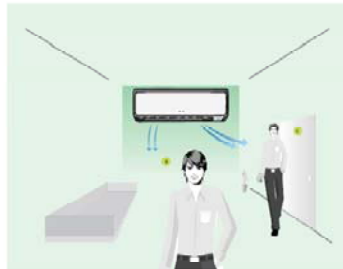
Case 3



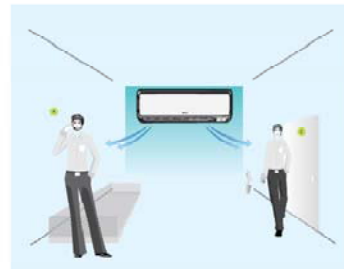
Case 4



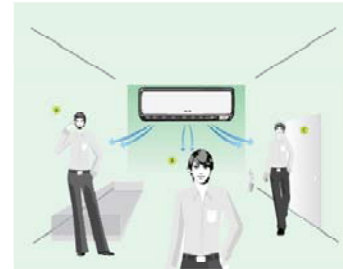
Case 5



Case 6



Case 7



Description	Unit	Ace Followme		
		1.2	1.5	2.0
Tonnage Class	Tr.	1.2	1.5	2.0
Star Rating	No of BEE Stars	5	5	3
Unit	Model Number	RAU514ESD	RAU518ESD	RAU324ESD
IDU	Model Number	RAS514ESD	RAS518ESD	RAS324ESD
ODU	Model Number	RAC514ESD	RAC518ESD	RAC324ESD
Compressor	Type	ROTARY	ROTARY	ROTARY
Rated Cooling Capacity	BTU/Hr	13819	18460	23714
Rated Cooling Capacity	Watts	4050	5410	6950
Rated Power Supply	Volts/Hz/Phase	230/50/1	230/50/1	230/50/1
Total Power Input	Watts	1190	1570	2350
EER	Rated Cooling Capacity (BTU/Hr) / Power Input (Watts)	11.61	11.76	10.09
COP	Rated Cooling Capacity (Watts) / Power Input (Watts)	3.40	3.45	2.96
Current Drawn	Amps	5.25	7.04	10.40
Fan Speed	Steps	5	5	5
Air Flow (IDU) (Super High)	CFM	424	583	636
Sound Level* (IDU)	dB	38	34	37
Dimension (IDU) (W X H X D)	mm	830 X 290 X 220	1050 X 290 X 220	1050 X 290 X 220
Dimension (ODU) (W X H X D)	mm	750 X 548 X 288	792 X 600 X 299	792 X 600 X 299
Net Weight (IDU)	Kg	10	12.9	12.9
Net Weight (ODU)	Kg	38.2	45.3	46.9
Remocon	Type	Wireless LCD	Wireless LCD	Wireless LCD

Features may vary from model to model.

\*At Super silent fan speed & at a distance of 1 m .

Hitachi air-conditioners are designed to work in ambient temperatures upto 52°C.

Due to continuous research & development , specifications & features may change without prior notice .